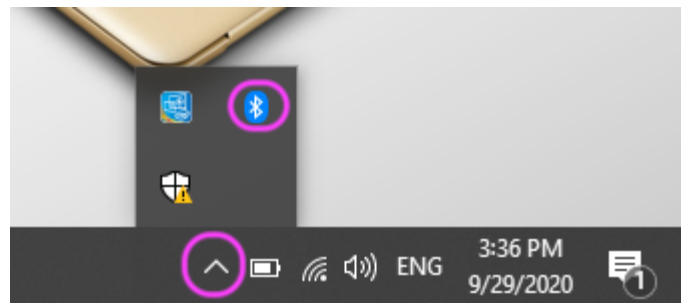




Pairing the GNS 3000 with Windows 10 Systems

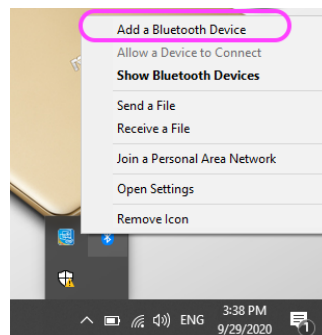
Step 1:

Click on the arrow located on the right side of the taskbar to show all tray symbols. Locate the Bluetooth symbol and click it.



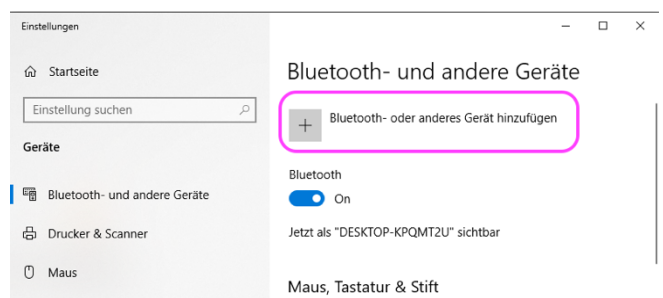
Step 2:

Click the marked entry ('Add Bluetooth-Device')



Step 2.1

The 'Bluetooth and other Devices' page opens. Be sure the GNS 3000 is switched on and click the 'Add' button.





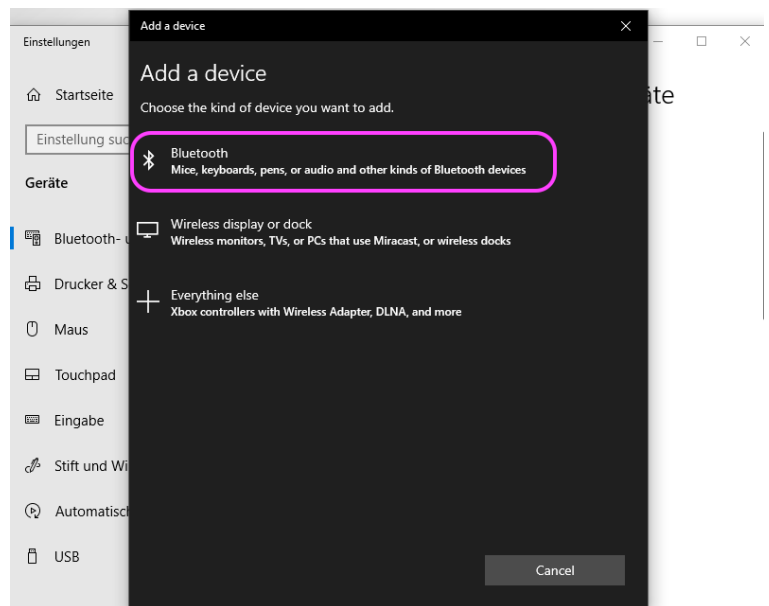
Tutorial

GNS 3000

notification

Step 2.2

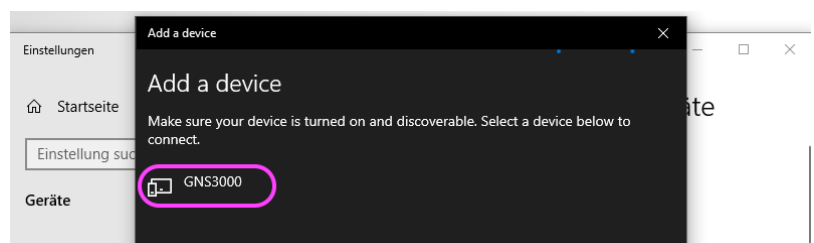
In the following dialog select 'Bluetooth'.



Step 2.3

After a few seconds you should see the GNS 3000 appear on the list.

If the GNS 3000 is not found, switch it off and click 'Cancel'. After a few seconds switch the device on again, and repeat from step 2.2.





Tutorial

GNS 3000

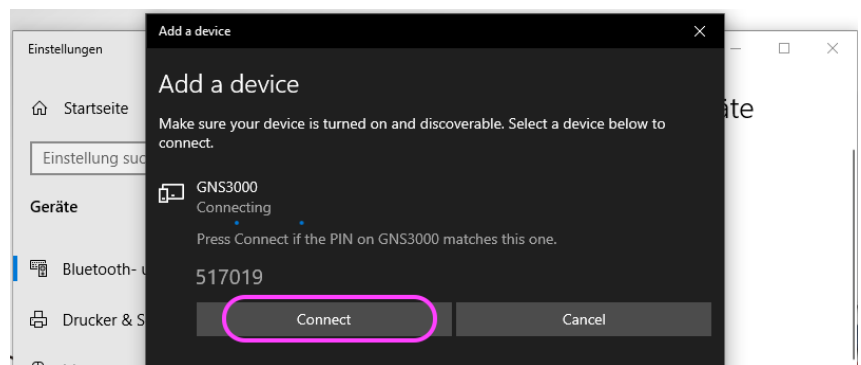
notification

Step 2.4

Type the PIN code to connect with your GNS 3000

The PIN code is 0000 (four zeros)

Now click on the "Connect" button.

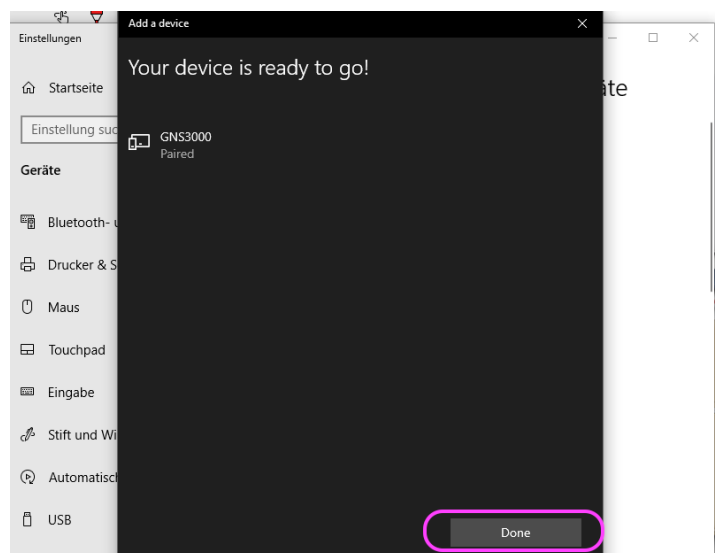


Depending on the Bluetooth configuration of your device, you may be asked to check a 6-digit numeric code shown on the screen as an alternative to the above input (four times zero). Also, in this case please press „Connect“ button.

Step 2.5

Click the 'Done' button to close the dialog.

Don't be surprised that the Bluetooth LED on your GNS 3000 continues blinking and doesn't change to steady light - this will be explained in the next steps.





Tutorial

GNS 3000

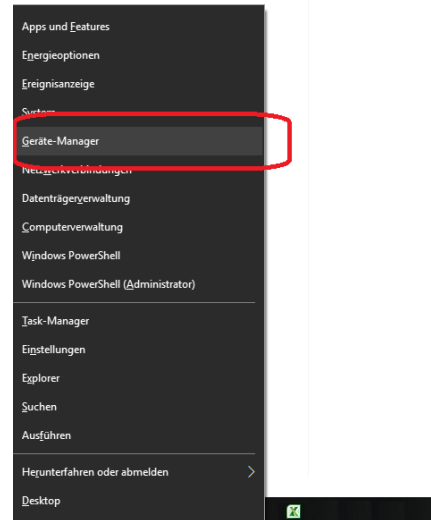
notification

Step 3

Please open the Device Manager to show your installed GNS 3000 and find the corresponding COM Port:

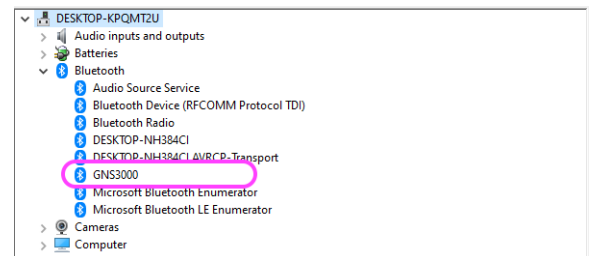
To open the Device Manager hold the **WINDOWS** key While pressing the **X** key on your keyboard ('Win-X').

Now select 'Device Manager'.



Continue by extending the 'Bluetooth' entry (click on the arrow in front of the Bluetooth symbol).

The installed GNS 3000 should be listed here.

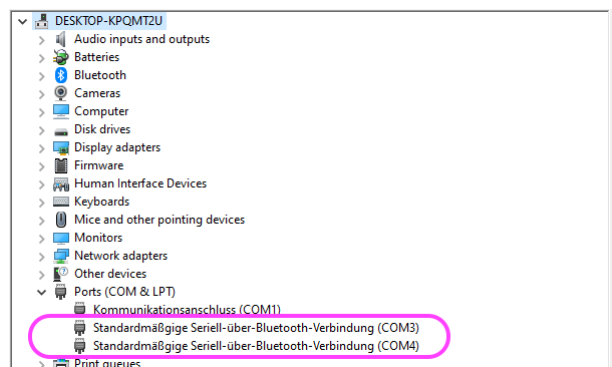


Step 4

To see which COM port is used for communication via Bluetooth, please proceed as follows:

Click on the arrow next to the 'Ports (COM & LPT)' entry.

Note the COM ports marked as standard serial connection via Bluetooth.



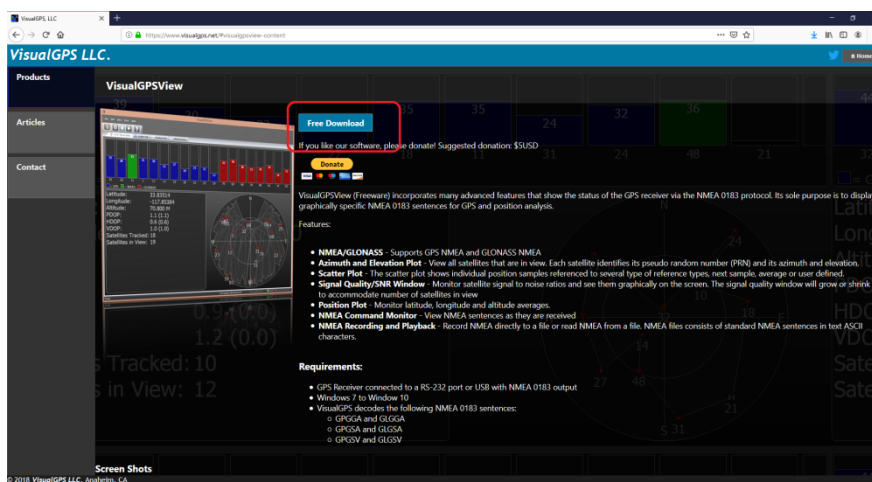


Which of the two Bluetooth COM ports is relevant for the later connection is not stored.
So it can be the upper one (in this case COM 3) or the lower one (in this case COM 4).
So please try both.

In the next steps we will show you how to display the data received from your GNS 3000.
On the following pages we will recommend a program that allows you to do this and explain step by step how to configure it.

To show the NMEA data (data received from satellites), please install and use this free program:
<https://www.visualgps.net/#visualgpsview-content>

Step 5



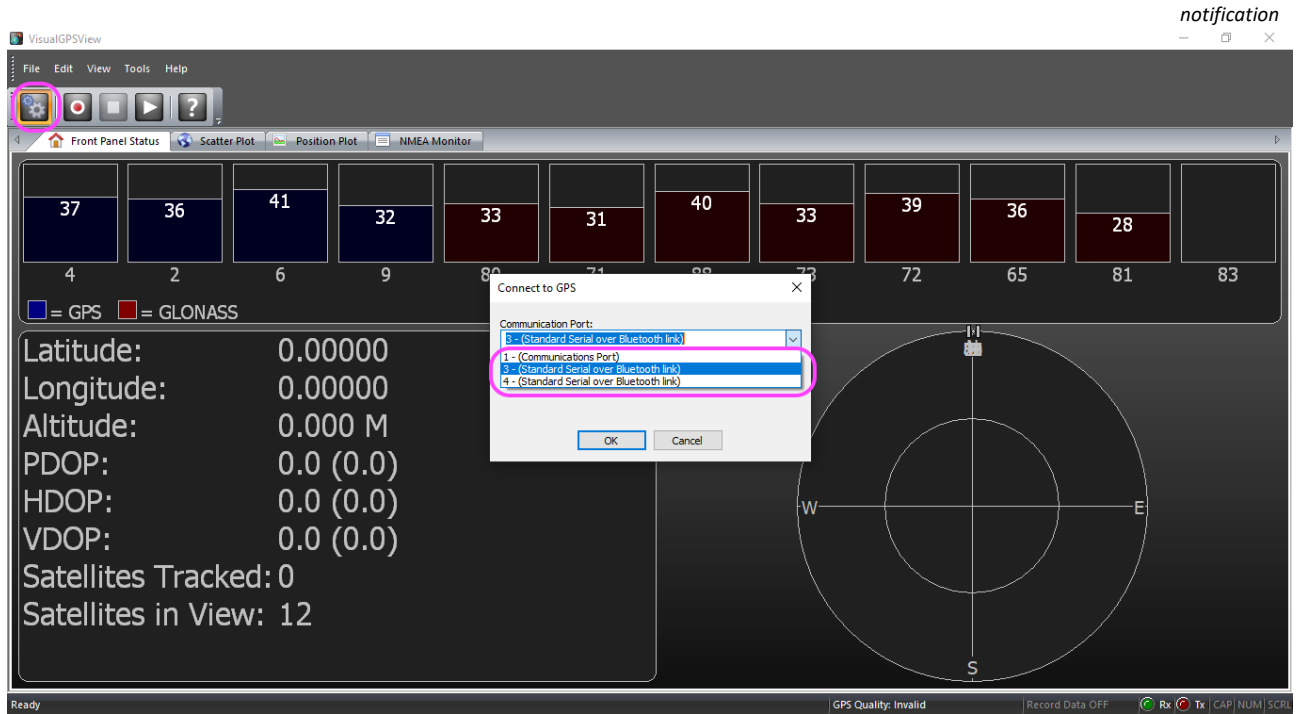
Please download and start the Program.

After starting the application, you first have to configure the COM Port you have noted down in Step 4.



Tutorial

GNS 3000



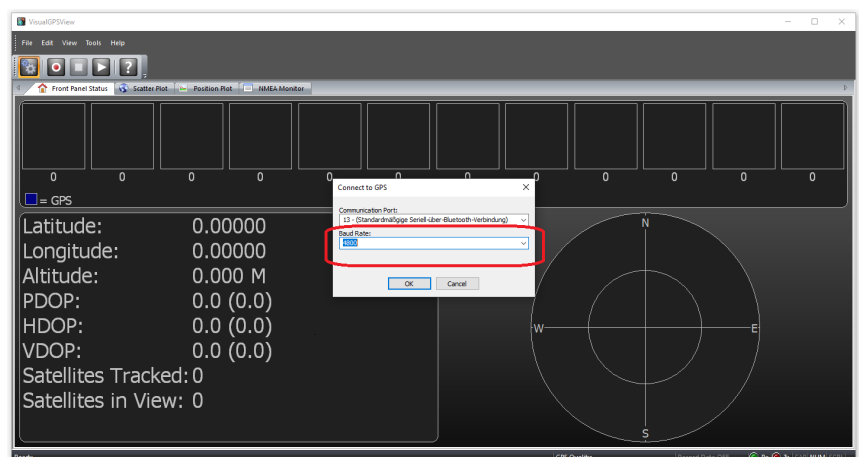
Step 6

Press the 'Connect to GPS' button and select the COM Port from Step 4, in this case COM3.

Step 6.1

You can keep the pre-selected baud rate as its value is not relevant here.

Now press OK to close the dialog and start the connection



GNS 3000

Step 6.2

At the same time, you will see the constant blue status LED on the GNS 3000 indicating a Bluetooth connection.

